



SHELTERGRAM

P.O. Box 257, 21 Goodnow St., Jaffrey, NH 03452

603-532-8222

Email: sftsnh@gmail.com • www.shelterfromthestormnh.org

Issue 31
March 2016

BOARD OF DIRECTORS

Chairman of the Board

Pamela G. White

Vice-Chair

Susan Leach

Treasurer

Rob Beaven

Recording Secretary

Anne Banghart

Corresponding Secretary

Sharron Monaghan

Members at Large

Heather Ames

Eileen Hackler

Dennis Monaghan

William Oswalt

Kendra Shea

David Tower, Esq.

EXECUTIVE DIRECTOR

Linda Harris

LIFE COACH

Karen Bednarski

TASK GROUP CHAIRS

Building Needs

Dennis & Sharron

Monaghan

Finance

Rob Beaven

**Fundraising/
Grant Writing**

Linda Harris

Program Management

Heather Ames



SAVE THE DATE!!

TASTE OF MONADNOCK & BEYOND ANNUAL FUNDRAISER MAY 15TH!!

Last May we held our first TASTE OF MONADNOCK & BEYOND. It truly was a success BEYOND our wildest dreams and proved to be one of the best events of the year. This year's event will be no exception.

Rudy Rosalez, owner of the Woodbound, has once again donated the grounds, as well as his expertise. We are also very happy to once again have a fabulous fireworks display by Atlas Fireworks, to end the evening with a "bang." Please see and share the poster for the event enclosed.

AFFINITY PROGRAM AT TD BANK

Shelter From The Storm recently received a cash contribution from TD Bank through the bank's Affinity Membership Program. THANK YOU.

TD Bank's Affinity Membership Program helps non-profit organizations raise money by receiving an annual cash contribution from TD Bank based upon the participation of qualified member accounts. For more information about TD Bank's Affinity Membership Program please see the insert.



"The Mission of Shelter From The Storm is to provide temporary housing and transitional support to the homeless."

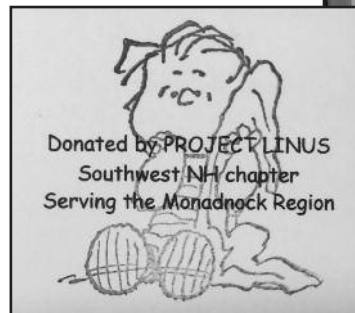
PROJECT LINUS

I was very fortunate to receive an email from Robyn Manley, coordinator of Project Linus in our area.

Robyn stated: "Today I learned about your organization through a letter to the editor in today's Ledger-Transcript. I think our local chapter of Project Linus could be of assistance to you and the families you serve. The mission of www.projectlinus.org is to provide love, a sense of security, warmth and comfort to children who are seriously ill, traumatized, or otherwise in need through the gifts of new, handmade blankets and afghans, created by volunteer "blanketeers. Basically, our blankets range from infants through toddlers, youth and teen."

Since this email we have received "security blankets" for all of our children, with a generous supply left for incoming families.

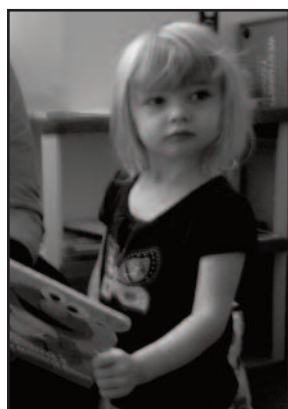
If you would like to participate in Project Linus, please go their website at: <http://www.projectlinus.org> or contact me at Shelter.



BACK TO CHRISTMAS

The staff of Summerhill Assisted Living faced a big challenge and successfully met all their goals. They "adopted" our families at Christmas.

The amazing staff at Summerhill felt that the financial struggles our folks had would make gift giving nearly impossible. Summerhill provided gifts for all ages from infant through adult and their wonderful residents provided all the gift wrapping. This incredible project was done under the guidance of Jean Kundert, Summerhill's Community Relations Coordinator. Three cheers to all and thank you for your kindness.



MOTHER'S GROUP



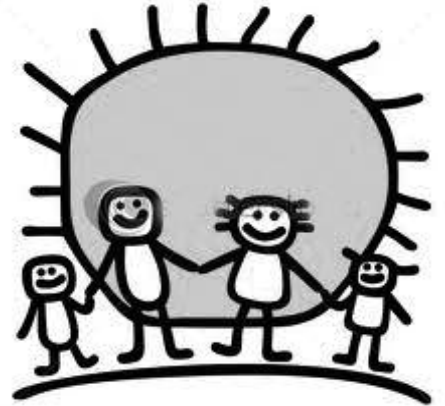
We continue to partner with the United Church of Jaffrey and the River Center of Peterborough to sponsor our Mothers'/Parenting Group. Kelli Tourgee of the River Center continues to facilitate the program. Refreshments and childcare are provided. A huge thanks to one of our volunteers, Linda Wilson, for helping with childcare. Hours are 9:30-11:30 every Friday at the United Church when school is in session and all are welcome. Participants go on field trips, learn about nutrition, and learn from each other.



OUR GUESTS & WHAT WE HAVE LEARNED

We have learned and continue to learn from our guests that:

1. Everyone is not the same.
2. Even though someone says they want help, it isn't always true.
3. Sometimes learned behavior CANNOT be changed.
4. Counseling is not for everyone, but everyone needs counseling.
5. Baby steps. Taking one step at a time can take you a long way towards your goals.



At present we have six full apartments, with one successful family of six moving to their own apartment this week. In our other apartments we have a single lady who came to us from an abusive relationship; a mom with two children who didn't have quite enough savings to make ends meet; a single mom and her daughter who were living in an unsafe apartment and were unable to find a place to live they could afford; a young mother with a 7 month old who had no transportation, was struggling to care for a child, work, and find appropriate services to help herself and daughter; and a couple with a four month old who were living in a one room apartment with shared bath and kitchen, had part-time work, a car that worked "sometimes," and didn't know where to turn. With your help we are able to make a difference in their lives and help them to rejoin the mainstream community one step at a time.

Here is a copy of a letter one of our former guests submitted to the Monadnock-Ledger, published February 15, 2016.

Imagine Not Having a House

by a former guest of SFTS

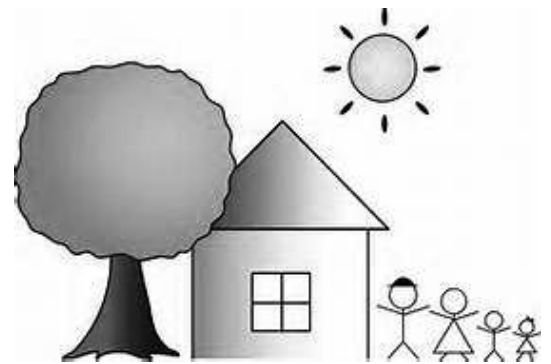
To the editor of the Ledger-Transcript:

You step outside and your eyeballs try to freeze over. Most people in this area have a nice, cozy home to come back to when their work day or errands are done. But that is not true of everyone in the Monadnock region.

Last February, which we all recall as snowmageddon, our landlord was foreclosed on and the flippers who bought the house evicted us. Before I learned about Shelter From the Storm, the best prospect for my family of six was sleeping in our car. Can you imagine not having a home? Living in your car, or worse, a tarp tent?

There are people out there, right now, who are struggling with basic needs. The Hundred Nights shelter in Keene is at capacity. Both of the transitional housing charities in our area, Shelter From the Storm and Monadnock Area Transitional Housing, often have waiting lists.

We live on Social Security disability and had no cushion to fall back on, no support network who could help. Shelter From the Storm stepped in. We were provided with shelter and many services and resources to help us. Providing stability while we regained our balance was a blessing beyond words. We completed the program and by the end of the summer had moved on. We are now in a new rental, with my children happy in school. We are so grateful to everyone who has been involved with Shelter From the Storm. I encourage you to educate yourself about homelessness in our area, and help in any way you can, including donating at ShelterFromTheStormNH.org.



BIRTHDAYS or REMEMBRANCES

Instead of buying a gift for a friend or family member, you can donate any amount of money to Shelter From The Storm in their name.

The recipient will receive a gift card indicating that a donation has been made to Shelter From The Storm.



GIFTING THAT MAKES A DIFFERENCE

Please consider making a donation in honor of or in memory of someone, and help us to provide a home for those in need.

Acknowledgment Cards are sent to the people on your list stating that a donation "gift" has been made in their name to SFTS. You are identified as the donor. Your donation amount is not identified. Shelter From The Storm will send the cards directly to the recipients. If you prefer, cards may be sent directly to you for personalization.

To purchase "donation gift" cards, please contact Shelter From The Storm at 603-532-8222 or complete the form below and return it with your check to the address below.

I would like to purchase a Shelter From The Storm Gift Card for the following:

Name: _____

Address: _____

City, State, Zip _____

Occasion: _____

Donation Total: _____

Donor's Name _____

Address: _____

City, State, Zip _____

Donor's Signature _____

UPCOMING EVENTS

| | |
|--|--------------------------|
| BOARD MTG. | March 8 - 8:30am-Office |
| TOWN MEETING | March 12 |
| DAYLIGHT SAVINGS | March 13 |
| PMC MEETING | March 15 - 6:30pm-Office |
| ST. PATRICK'S DAY | March 17 |
| EASTER | March 27 |
| FREE COMMUNITY SUPPER - 3rd Thurs/month | |
| 5:30-6:30pm-United Church of Jaffrey | |
| BOARD MTG. | April 5 - 8:30am-Office |
| PMC MEETING | April 12 - 6:30pm-Office |
| BOARD MTG. | May 3 - 8:30am-Office |
| MOTHER'S DAY | May 8 |
| PMC MEETING | May 10 - 6:30pm-Office |
| TASTE OF MONADNOCK & BEYOND | |
| May 15 - 5-8:30 PM - Woodbound Inn | |
| MEMORIAL DAY | Monday, May 30 |
| BOARD MTG. | June 7 - 8:30 am-Office |
| PMC MTG. | June 14 - 6:30pm-Office |
| MOTHER'S PROGRAM | Friday Mornings |
| 9:30-11:30am - United Church of Jaffrey | |
| (when school is in session) | |

WISH LIST

- Car - Reliable
- Gift Cards for guests in any amount
- Paper Products: toilet paper, paper towels, kleenex, etc.
- Cleaning Products
- Twin Mattresses - Good Condition



"The best feeling of HAPPINESS is when you're happy because you've made somebody else happy."



Please send Check/Money Order payable to: Shelter From The Storm, P.O. Box 257, Jaffrey, NH 03452

2nd ANNUAL



Taste of
MONADNOCK
& BEYOND

FOOD



& WINE



to benefit Shelter From The Storm
a transitional shelter for the homeless...

Join us for a "Tasting Dinner."

Sunday, May 15

5 pm to 8:30 pm

Fireworks
8:45

Woodbound Inn • Rindge, NH



- Beer, Food & Wine •
- Cooking Demos • Pig Roast •
- Local Artwork • Live Music •
- Raffles • Door Prizes •
- Fireworks •

Advance Tickets: \$40 / Door: \$45

For Group Rates call 603-532-8222.

Tickets may be purchased at Woodbound Inn, Sunflowers, Monadnock Inn,
Jaffrey Chamber, Shelter From The Storm, or
online at www.shelterfromthestormnh.org - Upcoming Events

For a list of participants go to our website or call: 603-532-8222

FESTIVAL 2016



An easy way to raise money for SHELTER FROM THE STORM at no cost to you!

TD Bank-SFTS Affinity Program



Bank

America's Most Convenient Bank®

Do you have an individual or business account at TD Bank?

If you do, please tell TD Bank you want to join SHELTER FROM THE STORM'S Affinity Program.

Raising funds for SHELTER FROM THE STORM does not get any easier than this!

By joining the Affinity Program, Shelter From The Storm will receive an annual contribution from TD Bank simply because you bank there!

Joining TD Bank's Affinity Program for SFTS is easy!

1. **Call or stop into any TD Bank office** (toll-free customer service number: 888-751-9000) or 532-1400 (JAFFREY TD BANK)
2. **Tell a bank representative** that you want to join the Affinity Program for SHELTER FROM THE STORM
3. **Give them your name and account numbers.** (TD Bank will keep all of your information strictly confidential.)

If you do not currently bank at TD Bank

Any bank associate can help you open an account and join the Affinity Program. Any TD Bank customer can join the Affinity Program benefitting SFTS, so **ask your friends, relatives, and business partners** with TD Bank accounts to call 888-751-9000 or 603-532-1400 and join too.

There is *absolutely* no cost to you.

How does the TD Bank Affinity Program work?

TD Bank will make an annual contribution to SFTS if accounts are linked to the SFTS Affinity Program. The amount of TD Bank's contribution is based on the average annual balance in the account of the customers who join the Affinity Program. Joining the program does NOT alter the terms or condition of your TD Bank accounts, and none of your funds or personal information will be given to SFTS.

If you have any questions, please call Shelter From The Storm at 603-532-8222.

P.O. Box 257 / 21 Goodnow Street / Jaffrey, NH 03452 / www.shelterfromthestormnh.org / sftsnh@gmail.com / 603-532-8222

The mission of Shelter From The Storm is to provide transitional housing and support services for the homeless.